

# STRATEGIC PLAN

**R** Respect  
Resilience  
Responsibility  
**I** Integrity  
Inclusivity  
**S** Striving for  
Success  
**E** Empowered

## 2024-2027



### Educational Achievement

- Strengthen the capabilities of teachers to enact differentiated teaching and learning through an embedded whole school approach, with an unrelenting focus on improving classroom teaching and learning for the full range of students.



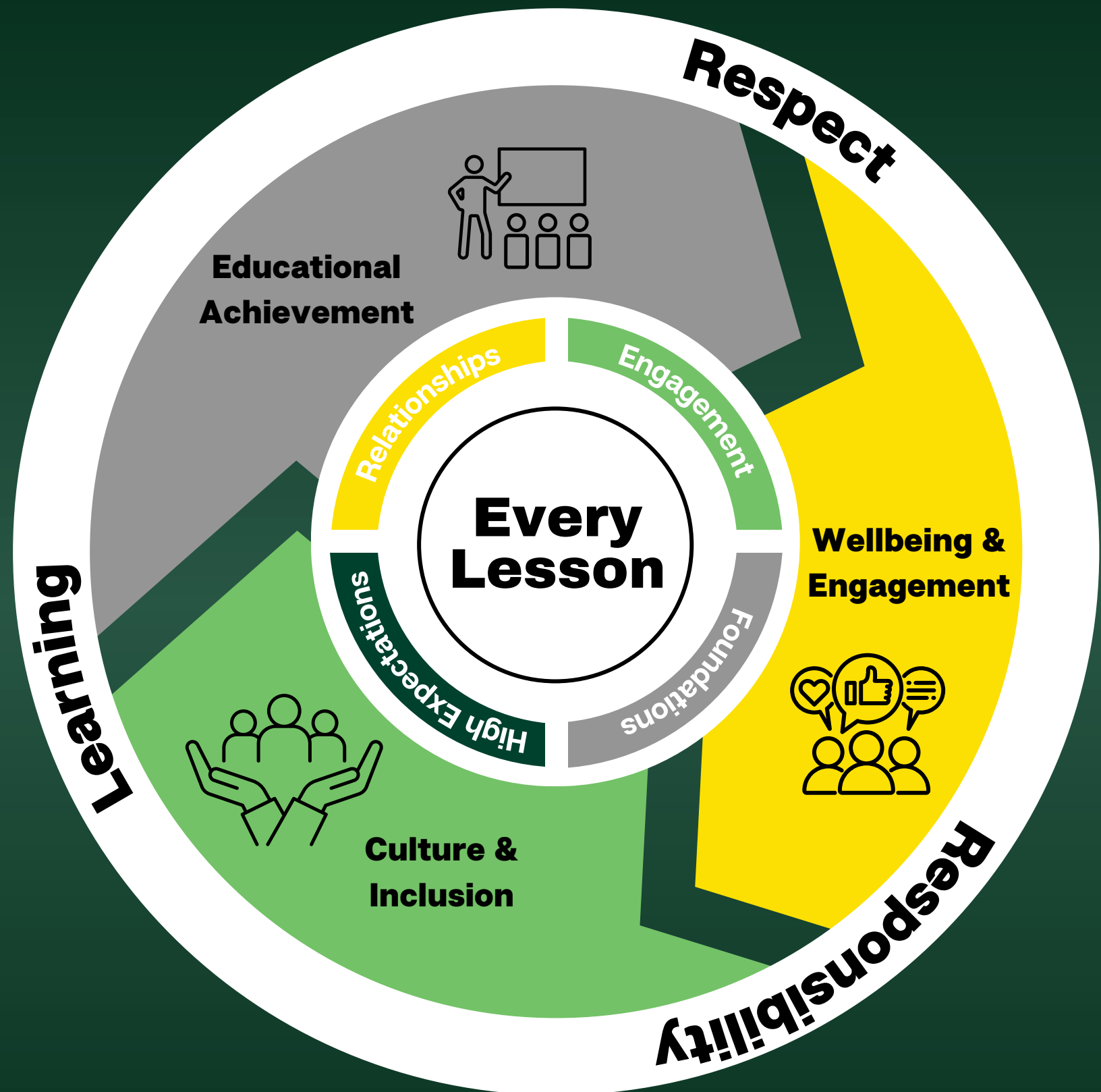
### Wellbeing & Engagement

- Consistently implement the school-wide approach to behaviour for learning to maintain and promote a safe, supportive and disciplined learning environment for all.
- Enhance community partnerships, co/extra-curricular partnerships and student transitions to support student engagement and successful pathways.



### Culture & Inclusion

- Develop a whole-school vision for inclusive education to ensure all students have access to a high-quality education.
- Promote the school RISE values as the foundation for our positive school culture and sense of belonging.



**ISIS DISTRICT**  
*State High School*

